



# STAINLESSLITE

UNVENTED MAINS PRESSURE  
AND VENTED WATER  
STORAGE CYLINDERS



✓ LIGHTEST CYLINDER ON THE MARKET ✓ ON-SITE SUPPORT ✓ NEXT DAY DELIVERY

**ONE NAME. EVERY SOLUTION.**

[WWW.GLEDHILL.NET](http://WWW.GLEDHILL.NET)



## BUILT ON EXPERIENCE

THE GLEDHILL BRAND HAS BEEN SYNONYMOUS WITH QUALITY MANUFACTURING AND EXPERTISE FOR ALMOST A CENTURY. OUR FLAGSHIP STAINLESSLITE PLUS RANGE BOASTS MORE THAN 70 MODELS AND IS THE RESULT OF CONTINUOUS PRODUCT DEVELOPMENT AND INNOVATION. IN FACT, WE'VE BEEN PRODUCING UNVENTED CYLINDERS SINCE THEIR VERY INCEPTION, SO REST ASSURED WE KNOW OUR STUFF.

## CONTENTS

- 02. BUILT ON EXPERIENCE
- 04. WE'VE GOT YOU COVERED
- 06. RELIABILITY AND QUALITY
- 07. ONE NAME. EVERY SOLUTION
- 08. THE COMPLETE PACKAGE
- 09. WHAT SIZE CYLINDER DO I NEED?

### STAINLESSLITE PLUS:

- 10. DIRECT & SLIMLINE
- 12. INDIRECT & SLIMLINE
- 14. HORIZONTAL INDIRECT
- 16. SOLAR DIRECT & SLIMLINE
- 18. SOLAR INDIRECT & SLIMLINE
- 20. HORIZONTAL SOLAR
- 22. HEAT PUMP & SLIMLINE
- 24. HEAT PUMP SOLAR
- 26. BUFFER STORE
- 28. FLEXIBLE BUFFER STORE

### STAINLESSLITE PRE-PLUMBED:

- 32. PRE-PLUMBED INDIRECT
- 34. SYSTEM PLUS INDIRECT
- 36. SYSTEM READY INDIRECT
- 38. SUPPORT GUARANTEED

# WE'VE GOT YOU COVERED

OUR FLAGSHIP NATIONAL DISTRIBUTION HUBS ARE LOCATED FOR FAST ORDERING, DELIVERY & SUPPORT.



## PLACE YOUR ORDER

WITH ALL YOUR REQUIREMENTS AT THE MERCHANT



## CONFIRMATION

RECEIVE CONFIRMATION OF THE PRICE WITHIN ONE HOUR



## MANUFACTURED

AT OUR CENTRES OF EXCELLENCE HERE IN THE UK



## NEXT DAY DELIVERY

TO ANY MAINLAND UK ADDRESS



FOR ORDERS  
08000 427 427  
ORDERS@GLEDHILL.NET

FOR TECHNICAL SUPPORT  
01253 474 584  
TECHNICALSUPPORT@GLEDHILL.NET



## OUR HUB LOCATIONS:

BLACKPOOL | HULL | BIRMINGHAM | BRISTOL | LONDON

# RELIABILITY AND QUALITY

IF YOU'RE INSTALLING GLEDHILL, YOU CAN BE CONFIDENT YOU'RE INSTALLING QUALITY. MANUFACTURED FROM HIGH SPECIFICATION DUPLEX STAINLESS STEEL, OUR STAINLESSLITE PLUS RANGE IS DESIGNED TO RESIST ALL FORMS OF CORROSION, INCLUDING CREVICE AND STRESS.

Its high mechanical strength promises durability, while automated welding procedures, post weld pickling and passivating treatment guarantee each individual weld is as strong as its parent metal.

Our StainlessLite Plus cylinders are pressure tested to a full 12 bar - four times their normal working pressure - and injected with 50mm of our HCFC free EnviroFoam insulation to achieve astonishingly low levels of heat loss, which maximises energy efficiency for your customers.

IN ADDITION, ALL OUR STAINLESSLITE PLUS UNVENTED CYLINDERS COME WITH A 25 YEAR WARRANTY WITH ON-SITE SUPPORT, PROMISING PEACE OF MIND.\*

**25**  
YEAR  
WARRANTY

WITH ON-SITE  
SUPPORT

ALIGNED TAPPING  
POSITIONS FOR  
EASE OF  
INSTALLATION

NEW FLAT TOP;  
PROVIDING 20%  
MORE INSULATION

RUBBER  
CONNECTION  
LABELS & IMPROVED  
CAPS WITH FOAM  
RETENTION

COLOUR MATCHED  
COMPONENTS  
TO IMPROVE  
APPEARANCE

WIDER BASE TO  
IMPROVE STABILITY

# ONE NAME. EVERY SOLUTION

OUR STAINLESSLITE PLUS RANGE IS AVAILABLE IN DIRECT AND INDIRECT PATTERNS, AND IN SIZES FROM 60 LITRES UP TO 400 LITRES. THE RANGE ALSO INCLUDES A SELECTION OF CYLINDERS COMPATIBLE WITH SOLAR THERMAL, HEAT PUMPS OR A COMBINATION OF BOTH.

Struggling for space? Try the StainlessLite Plus slimline or the StainlessLite Plus horizontal cylinder; one of the first domestic horizontal unvented cylinders to gain NSF approval.

Whatever the task, whatever your requirements, we've got a cylinder to suit.



LIGHTEST CYLINDER  
ON THE MARKET

- ✓ LIGHTEST CYLINDER ON THE MARKET
- ✓ COMPETITIVELY PRICED ACROSS THE RANGE
- ✓ NEW DISTRIBUTION NETWORK FOR FAST NEXT DAY DELIVERY



25  
YEAR  
WARRANTY



GAS OR OIL  
BOILERS



IMMERSION  
HEATER



SOLID  
FUEL



SOLAR  
PHOTOVOLTAIC



SOLAR  
THERMAL



AIR OR  
GROUND SOURCE  
HEAT PUMPS



PRE-PLUMBED &  
SYSTEM PLUS  
DEVELOPED  
FOR NEW BUILD



\*For full warranty information, please refer to the relevant installation manual.



# THE COMPLETE PACKAGE

MANY OF OUR STAINLESSLITE PLUS PRODUCTS ARE SUPPLIED WITH ALL THE FITTINGS YOU'LL NEED TO COMPLETE THE INSTALLATION - JUST ADD THE PIPEWORK.

- ✓ EXPANSION VESSEL COMPLETE WITH INTEGRAL BRACKETS SUPPLIED IN THE G3 KIT
- ✓ COMPRESSION FITTINGS SUPPLIED WITH UNVENTED PRODUCTS
- ✓ 90° ELBOW SUPPLIED ON HOT WATER DRAW OFF TO REDUCE INSTALLATION TIME
- ✓ LIFT UP PRESSURE AND TEMPERATURE RELIEF VALVE SUPPLIED FOR EASIER DRAIN DOWN



# WHAT SIZE CYLINDER DO I NEED?

WHEN CALCULATING THE CORRECT SIZED HOT WATER CYLINDER REQUIRED FOR A TYPICAL DOMESTIC HOUSEHOLD, A SIMPLE RULE OF THUMB IS TO ALLOW BETWEEN 35 AND 45 LITRES FOR EVERY OCCUPANT.

Here's a simple guide to the minimum cylinder size required to meet demand - remember to consider your clients' future hot water demands too, such as additional people, additional outlets etc.

Hot water demand	Bedrooms	Indirect unit size	Direct unit size
1 standard bath or shower	bedsit / 1 bed	60/90	150
	2 - 3 bed	120	180
	3 - 4 bed	150	210
1 standard bath	2 - 3 bed	120	180
	3 - 4 bed	150	210
1 standard bath and 1 en-suite	2 - 3 bed	150	210
	3 - 4 bed	150	210
	4 - 5 bed	180	250
2 standard baths	2 - 3 bed	180	210
	3 - 4 bed	180	210
	4 - 5 bed	210	250
3 standard baths	2 - 3 bed	250	300
	3 - 4 bed	300	-
	4 - 5 bed	400	-

If you're utilising a renewable energy source, you'll need to consider not just the lower temperature input, such as from a heat pump, but also the constant availability of that heat source with solar thermal.

	Direct models	Indirect models	Solar direct models	Solar indirect models	Heat pump models
Inlet control group	•	•	•	•	•
Pressure and temperature relief valve	•	•	•	•	•
Tundish	•	•	•	•	•
3kW immersion heater (main heat source)	•				
3kW immersion heater (back up heat source)	•	•	•	•	•
Expansion vessel c/w integral bracket	•	•	•	•	•
Two port valve		•		•	•
Dual control and combined overheat thermostat		•	•	•	•
Installation manual	•	•	•	•	•

# STAINLESSLITE PLUS DIRECT

90 | 120 | 150 | 180 | 210 | 250 | 300 LITRES



## KEY FEATURES

- Designed for use with electricity either from mains supply or photovoltaic panels
- Suitable for use with economy electricity tariffs to maximise efficiency
- 3kW incoloy 825 immersion heater for use as a primary heat source
- 3kW incoloy 825 immersion heater for emergency back-up
- 90° elbow and drain valve supplied as standard
- Standard and slimline models available



25 YEAR WARRANTY



LIGHTEST CYLINDER ON THE MARKET

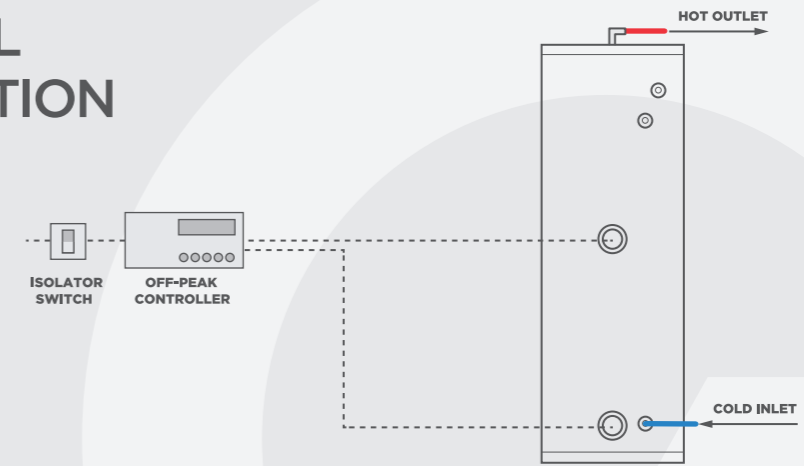


SOLAR PHOTOVOLTAIC



IMMERSION HEATER

## TECHNICAL SPECIFICATION



### STAINLESSLITE PLUS DIRECT

Description		D90	D120	D150	D180	D210	D250	D300
Product stock code		PLUDR090	PLUDR120	PLUDR150	PLUDR180	PLUDR210	PLUDR250	PLUDR300
ErP rating		C	C	C	C	C	C	C
Heat loss	watts	32	39	47	55	62	74	86
Capacity	litres	91	119	148	178	208	248	287
Height	mm	764	931	1118	1306	1494	1744	1990
Diameter	mm	550	550	550	550	550	550	550
Weight (empty)	kg	18	21	25	28	32	36	41
Weight (full)	kg	109	140	173	206	240	284	328
Heat up time	min	90	119	150	179	209	249	299
Number of immersions		1	2	2	2	2	2	2
Secondary return		No	No	No	No	Yes	Yes	Yes

### STAINLESSLITE PLUS SLIMLINE DIRECT

Description		D90-SL	D120-SL	D150-SL	D180-SL	D210-SL
Product stock code		PLUDR090SL	PLUDR120SL	PLUDR150SL	PLUDR180SL	PLUDR210SL
ErP rating		C	C	C	C	C
Heat loss	watts	37	47	56	67	74
Capacity	litres	91	122	152	183	202
Height	mm	976	1248	1519	1791	1963
Diameter	mm	475	475	475	475	475
Weight (empty)	kg	18	23	27	31	34
Weight (full)	kg	106	143	176	212	231
Heat up time	min	90	119	150	179	209
Number of immersions		1	2	2	2	2
Secondary return		No	No	No	No	Yes

#### NOTES:

- 1 Heat up time from 15°C to 60°C (applies to primary heat source only)
- 2 For further ErP information, please refer to the installation manual at [www.gledhill.net](http://www.gledhill.net)
- 3 The schematics shown above are representational, please refer to the installation manual for full technical requirements
- 4 Please note that the top immersion on the PLUDR180 is 327mm high

# STAINLESSLITE PLUS INDIRECT

60 | 90 | 120 | 150 | 180 | 210 | 250 | 300 | 400 LITRES



**STAINLESSLITE PLUS  
INDIRECT NOW B-RATED  
UP TO 210L**

## KEY FEATURES

- Designed for use with gas or oil boilers, either sealed system or open vented
- High efficiency corrugated coil maximises heat transfer to the cylinder of water
- Corrugated coil provides faster reheat times compared to plain coil
- 3kW incoloy immersion heater for emergency back-up
- 90° elbow and drain valve supplied as standard
- Standard and slimline models available



25 YEAR  
WARRANTY



LIGHTEST CYLINDER  
ON THE MARKET

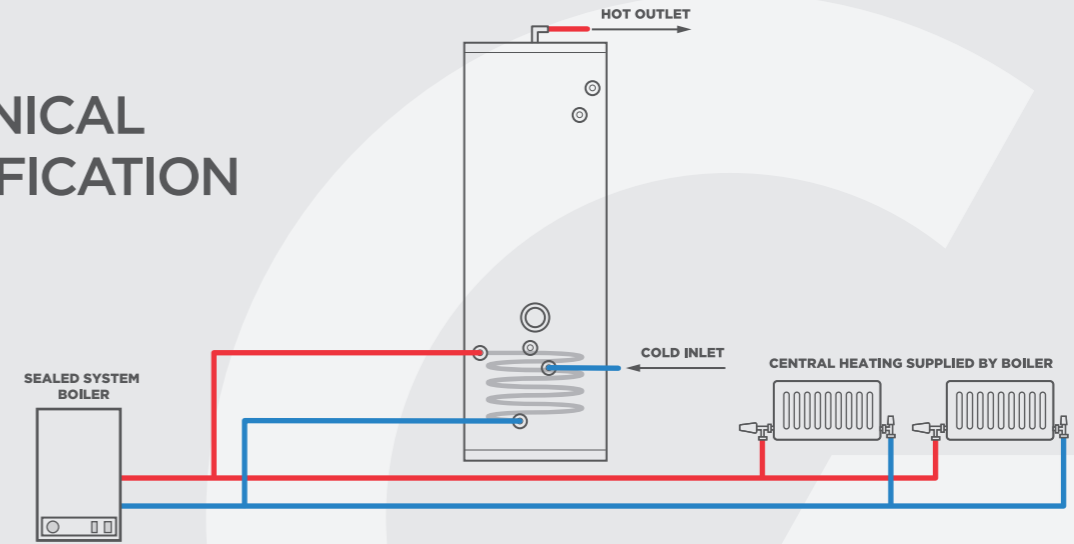


GAS OR OIL  
BOILERS



IMMERSION  
HEATER

## TECHNICAL SPECIFICATION



## STAINLESSLITE PLUS INDIRECT

Description		IND90	IND120	IND150	IND180	IND210	IND250	IND300	IND400
Product stock code		PLUIN090	PLUIN120	PLUIN150	PLUIN180	PLUIN210	PLUIN250	PLUIN300	PLUIN400
ErP rating		A	B	B	B	B	C	C	C
Heat loss	watts	32	39	47	55	62	74	86	87
Capacity	litres	91	119	148	178	208	248	287	393
Height	mm	764	931	1118	1306	1494	1744	1990	2030
Diameter	mm	550	550	550	550	550	550	550	630
Weight (empty)	kg	20	23	26	30	33	38	43	55
Weight (full)	kg	111	142	174	208	241	286	330	455
Heat up time	min	17	21	25	30	32	36	38	41
Number of immersions		1	1	1	1	1	2	2	2
Secondary return		No	No	No	No	Yes	Yes	Yes	Yes

## STAINLESSLITE PLUS SLIMLINE INDIRECT

Description		IND60-SL	IND90-SL	IND120-SL	IND150-SL	IND180-SL	IND210-SL
Product stock code		PLUIN060SL	PLUIN090SL	PLUIN120SL	PLUIN150SL	PLUIN180SL	PLUIN210SL
ErP rating		A	B	B	B	C	C
Heat loss	watts	27	37	47	56	67	74
Capacity	litres	62	91	122	152	183	202
Height	mm	704	976	1248	1519	1791	1963
Diameter	mm	475	475	475	475	475	475
Weight (empty)	kg	16	20	24	28	32	35
Weight (full)	kg	75	108	144	177	213	232
Heat up time	min	13	17	21	25	30	32
Number of immersions		1	1	1	1	1	1
Secondary return		No	No	No	No	No	Yes

### NOTES:

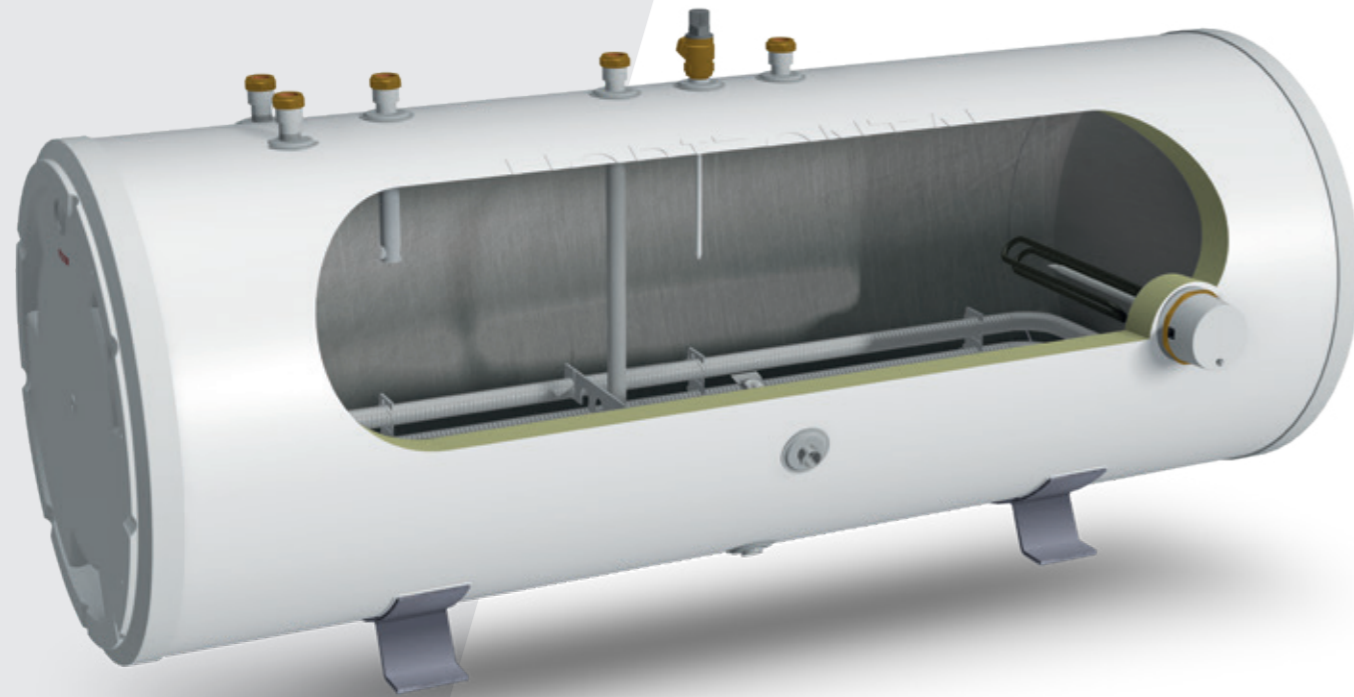
- 1 Heat up time from 15°C to 60°C (applies to primary heat source only)
- 2 For further ErP information, please refer to the installation manual at [www.gledhill.net](http://www.gledhill.net)
- 3 The schematics shown above are representational, please refer to the installation manual for full technical requirements

# STAINLESSLITE PLUS HORIZONTAL INDIRECT

180 | 210 | 250 | 300 LITRES

## KEY FEATURES

- One of the first independently approved domestic horizontal unvented cylinders
- Provides the ideal solution for height restricted installation spaces
- Designed for use with gas or oil boilers
- High efficiency corrugated coil maximises heat transfer to the cylinder of water
- 3kW incoloy immersion heater for emergency back-up



25 YEAR WARRANTY



LIGHTEST CYLINDER ON THE MARKET

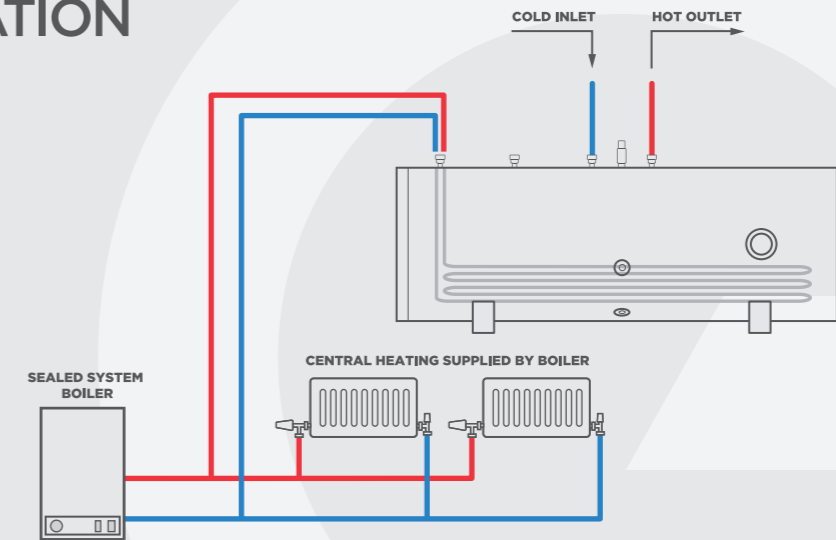


GAS OR OIL BOILERS



IMMERSION HEATER

## TECHNICAL SPECIFICATION



## STAINLESSLITE PLUS HORIZONTAL INDIRECT

Description		IND180	IND210	IND250	IND300
Product stock code		PLUIN180H	PLUIN210H	PLUIN250H	PLUIN300H
ErP rating		C	C	C	C
Heat loss	watts	78	82	86	91
Capacity	litres	172	206	244	288
Overall height	mm	588	588	588	588
Overall width	mm	1306	1494	1744	1990
Diameter	mm	550	550	550	550
Weight (empty)	kg	29	31	35	46
Weight (full)	kg	201	237	279	334
Heat up time	min	27	27	36	32
Number of immersions		1	1	2	2
Secondary return		Yes	Yes	Yes	Yes

### NOTES:

- 1 Heat up time from 15°C to 60°C (applies to primary heat source only)
- 2 For further ErP information, please refer to the installation manual at [www.gledhill.net](http://www.gledhill.net)
- 3 The schematics shown above are representational, please refer to the installation manual for full technical requirements



# STAINLESSLITE PLUS SOLAR DIRECT

180 | 210 | 250 | 300 | 400 LITRES



**STAINLESSLITE PLUS  
SOLAR DIRECT NOW  
B-RATED UP TO 210L**

## KEY FEATURES

- Specifically designed for use with solar thermal panels
- Corrugated coil to maximise the heat transfer from the solar input
- 3kW incoloy 825 immersion heater for use as a secondary heat source when required
- 3kW incoloy immersion heater for emergency back-up
- 90° elbow and drain valve supplied as standard
- Standard and slimline models available



25 YEAR  
WARRANTY



LIGHTEST CYLINDER  
ON THE MARKET

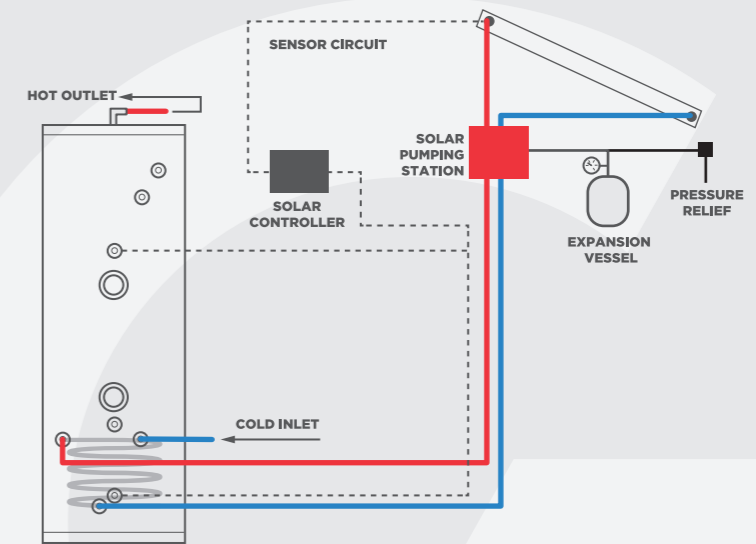


SOLAR  
THERMAL



IMMERSION  
HEATER

## TECHNICAL SPECIFICATION



## STAINLESSLITE PLUS SOLAR DIRECT

Description		SOL180d	SOL210d	SOL250d	SOL300d	SOL400d
Product stock code		PLUDR180S	PLUDR210S	PLUDR250S	PLUDR300S	PLUDR400S
ErP rating		B	B	C	C	C
Heat loss	watts	55	62	74	86	87
Capacity	litres	178	208	248	287	393
Height	mm	1306	1494	1744	1990	2030
Diameter	mm	550	550	550	550	630
Weight (empty)	kg	30	34	39	43	49
Weight (full)	kg	208	242	287	330	449
Heat up time	min	n/a	n/a	n/a	n/a	n/a
Dedicated solar volume	litres	60	70	84	100	150
Number of immersions		2	2	2	2	2
Secondary return		No	Yes	Yes	Yes	Yes

## STAINLESSLITE PLUS SOLAR SLIMLINE DIRECT

Description		SOL 180d-SL	SOL 210d-SL
Product stock code		PLUDR180SSL	PLUDR210SSL
ErP rating		C	C
Heat loss	watts	67	74
Capacity	litres	183	202
Height	mm	1791	1963
Diameter	mm	475	475
Weight (empty)	kg	34	36
Weight (full)	kg	215	233
Heat up time	min	n/a	n/a
Dedicated solar volume	litres	60	70
Number of immersions		2	2
Secondary return		No	Yes

### NOTES:

- 1 The dedicated solar volume is the amount of water that cannot be heated by any other heat source in line with ADL1 Compliance
- 2 Heat up time from 15°C to 60°C (applies to primary heat source only)
- 3 For further ErP information, please refer to the installation manual at [www.gledhill.net](http://www.gledhill.net)
- 4 The schematics shown above are representational, please refer to the installation manual for full technical requirements

# STAINLESSLITE PLUS SOLAR INDIRECT

180 | 210 | 250 | 300 | 400 LITRES



**STAINLESSLITE PLUS  
SOLAR INDIRECT NOW  
B-RATED UP TO 210L**

## KEY FEATURES

- Specifically designed for use with solar thermal panels in addition to gas or oil boilers
- High efficiency corrugated coil maximises heat transfer from the solar input
- 3kW incoloy immersion heater for emergency back-up
- 90° elbow and drain valve supplied as standard
- Standard and slimline models available



25 YEAR WARRANTY



LIGHTEST CYLINDER ON THE MARKET



GAS OR OIL BOILERS

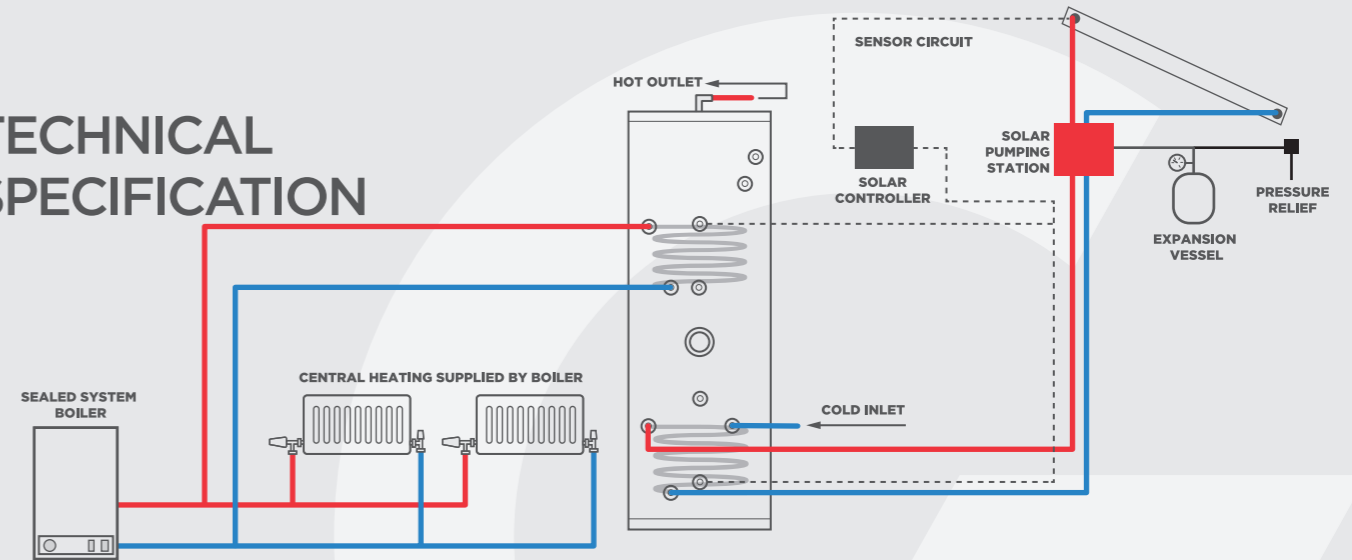


SOLAR THERMAL



IMMERSION HEATER

## TECHNICAL SPECIFICATION



## STAINLESSLITE PLUS SOLAR INDIRECT

Description		SOL180i	SOL210i	SOL250i	SOL300i	SOL400i
Product stock code		PLUIN180S	PLUIN210S	PLUIN250S	PLUIN300S	PLUIN400S
ErP rating		B	B	C	C	C
Heat loss	watts	55	62	74	86	87
Capacity	litres	178	208	248	287	393
Height	mm	1306	1494	1744	1990	2030
Diameter	mm	550	550	550	550	630
Weight (empty)	kg	31	35	40	44	59
Weight (full)	kg	209	243	288	331	459
Heat up time	min	28	35	38	41	45
Dedicated solar volume	litres	96	101	107	125	165
Number of immersions		1	1	1	1	1
Secondary return		No	Yes	Yes	Yes	Yes

## STAINLESSLITE PLUS SOLAR SLIMLINE INDIRECT

Description		SOL180i-SL	SOL210i-SL
Product stock code		PLUIN180SSL	PLUIN210SSL
ErP rating		C	C
Heat loss	watts	67	74
Capacity	litres	183	202
Height	mm	1791	1963
Diameter	mm	475	475
Weight (empty)	kg	34	36
Weight (full)	kg	215	233
Heat up time	min	28	35
Dedicated solar volume	litres	60	70
Number of immersions		1	1
Secondary return		No	Yes

### NOTES:

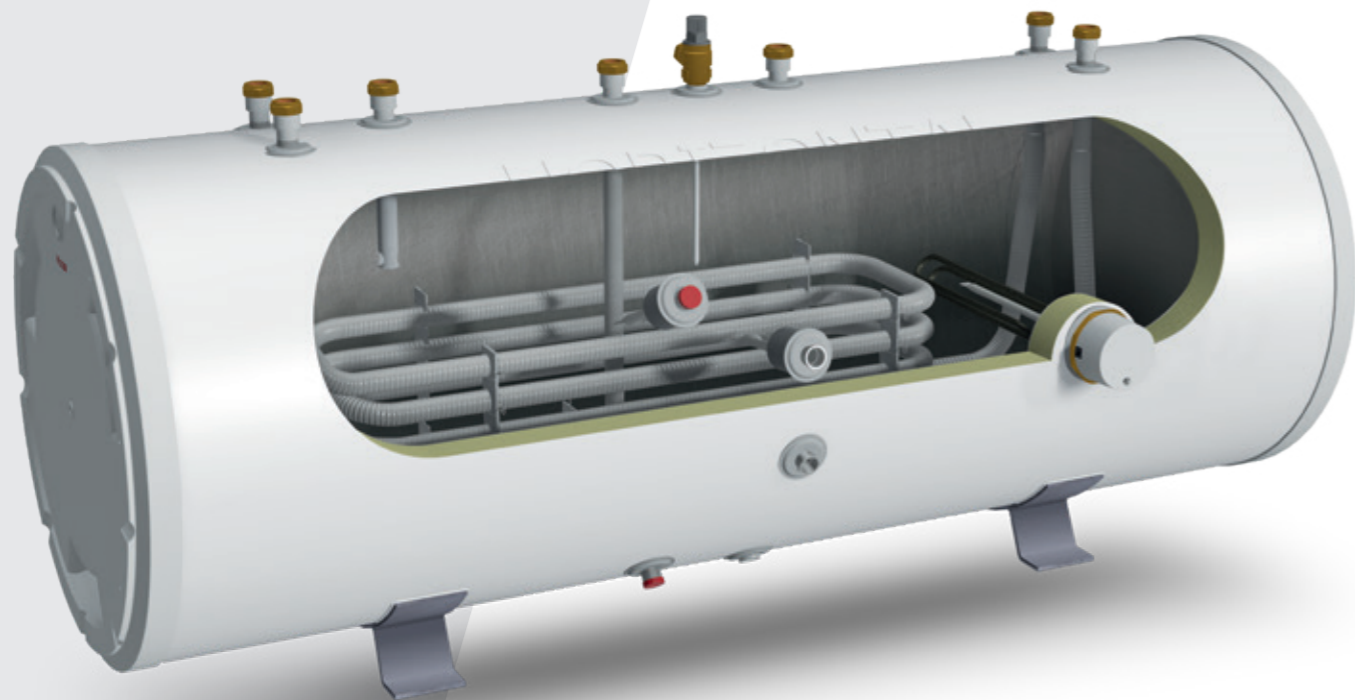
- 1 The dedicated solar volume is the amount of water that cannot be heated by any other heat source in line with ADL1 Compliance
- 2 Heat up time from 15°C to 60°C (applies to primary heat source only)
- 3 For further ErP information, please refer to the installation manual at [www.gledhill.net](http://www.gledhill.net)
- 4 The schematics shown above are representational, please refer to the installation manual for full technical requirements

# STAINLESSLITE PLUS HORIZONTAL SOLAR

180 | 210 | 250 | 300 LITRES

## KEY FEATURES

- One of the first independently approved domestic horizontal unvented cylinders
- Provides the ideal solution for height restricted installation spaces
- Specifically designed for use with solar thermal panels in addition to gas or oil boilers
- 3kW incoloy immersion heater for emergency back-up



25  
YEAR  
WARRANTY



LIGHTEST CYLINDER  
ON THE MARKET



GAS OR OIL  
BOILERS

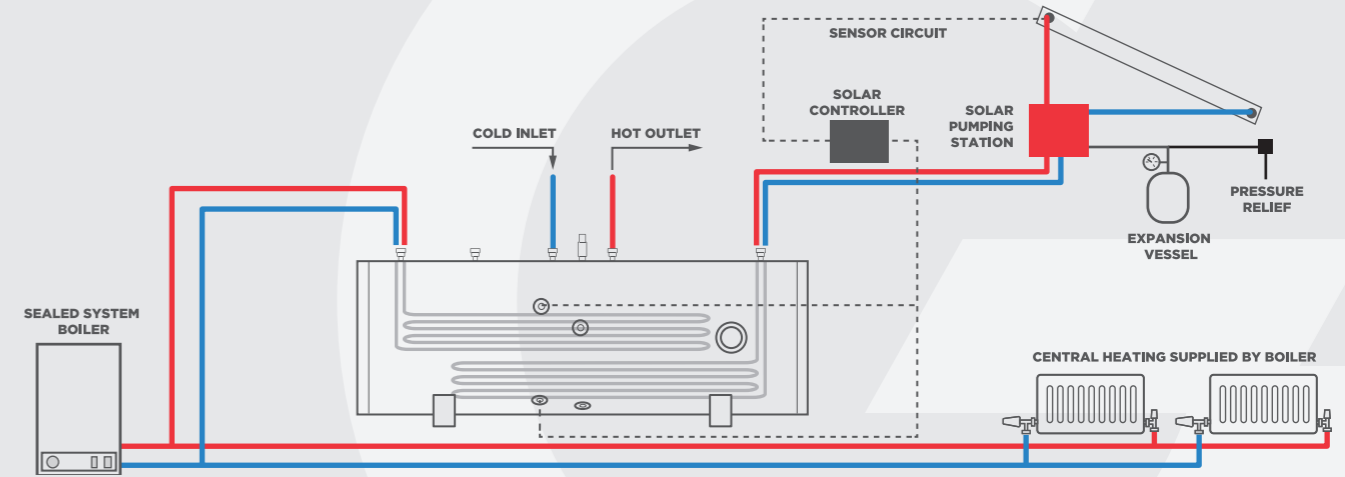


SOLAR  
THERMAL



IMMERSION  
HEATER

## TECHNICAL SPECIFICATION



## STAINLESSLITE PLUS HORIZONTAL SOLAR

Description		IND180 SOL	IND210 SOL	IND250 SOL	IND300 SOL
Product stock code		PLUIN180SH	PLUIN210SH	PLUIN250SH	PLUIN300SH
ErP rating		C	C	C	C
Heat loss	watts	78	82	86	91
Capacity	litres	170	204	244	287
Overall height	mm	588	588	588	588
Overall width	mm	1306	1494	1744	1990
Diameter	mm	550	550	550	550
Weight (empty)	kg	29	31	34	45
Weight (full)	kg	199	235	278	332
Heat up time	min	21	24	38	26
Dedicated solar volume	litres	64	85	112	145
Number of immersions		1	1	1	1
Secondary return		Yes	Yes	Yes	Yes

### NOTES:

- 1 The dedicated solar volume is the amount of water that cannot be heated by any other heat source in line with ADL1 Compliance
- 2 Heat up time from 15°C to 60°C (applies to primary heat source only)
- 3 For further ErP information, please refer to the installation manual at [www.gledhill.net](http://www.gledhill.net)
- 4 The schematics shown above are representational, please refer to the installation manual for full technical requirements

# STAINLESSLITE PLUS HEAT PUMP

180 | 210 | 250 | 300 | 400 LITRES



**STAINLESSLITE PLUS  
HEAT PUMP NOW  
B-RATED UP TO 210L**

## KEY FEATURES

- Designed for use with either air source or ground source heat pumps
- High efficiency corrugated coil maximises heat transfer to the cylinder of water
- 3kW incoloy immersion heater for emergency back-up
- 90° elbow and drain valve supplied as standard
- Standard and slimline models available



25 YEAR  
WARRANTY



LIGHTEST CYLINDER  
ON THE MARKET

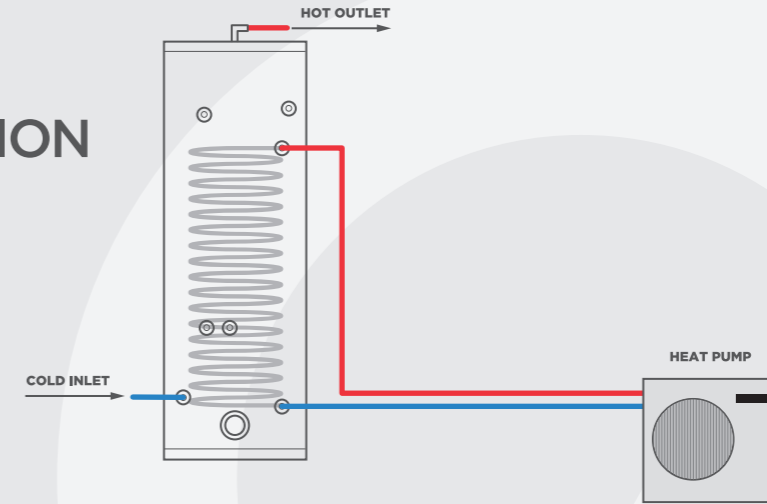


IMMERSION  
HEATER



AIR OR  
GROUND SOURCE  
HEAT PUMPS

## TECHNICAL SPECIFICATION



## STAINLESSLITE PLUS HEAT PUMP

Description		HP180IND	HP210IND	HP250IND	HP300IND	HP400IND
Product stock code		PLUHP180	PLUHP210	PLUHP250	PLUHP300	PLUHP400
ErP rating		B	B	C	C	C
Heat loss	watts	55	62	74	86	87
Capacity	litres	178	208	248	287	393
Height	mm	1306	1494	1744	1990	2030
Diameter	mm	550	550	550	550	630
Weight (empty)	kg	34	38	43	47	62
Weight (full)	kg	212	246	291	334	462
Surface area of HP coil	m <sup>2</sup>	2.5	3	3	3	4
Number of immersions		1	1	1	1	1
Secondary return		No	Yes	Yes	Yes	Yes

## STAINLESSLITE PLUS SLIMLINE HEAT PUMP

Description		HP180SL	HP210SL
Product stock code		PLUHP180SL	PLUHP210SL
ErP rating		C	C
Heat loss	watts	67	74
Capacity	litres	183	202
Height	mm	1791	1963
Diameter	mm	475	475
Weight (empty)	kg	38	40
Weight (full)	kg	219	237
Surface area of HP coil	m <sup>2</sup>	3	3
Number of immersions		1	1
Secondary return		No	Yes

### NOTES:

- 1 For further ErP information, please refer to the installation manual at [www.gledhill.net](http://www.gledhill.net)
- 2 The schematics shown above are representational, please refer to the installation manual for full technical requirements

# STAINLESSLITE PLUS HEAT PUMP SOLAR

180 | 210 | 250 | 300 | 400 LITRES



## KEY FEATURES

- Designed for use with either air source or ground source heat pumps in addition to solar thermal panels
- High efficiency corrugated coil maximises heat transfer to the cylinder of water
- 3kW incoloy immersion heater for emergency back-up
- 90° elbow and drain valve supplied as standard



25 YEAR WARRANTY



LIGHTEST CYLINDER ON THE MARKET



IMMERSION HEATER

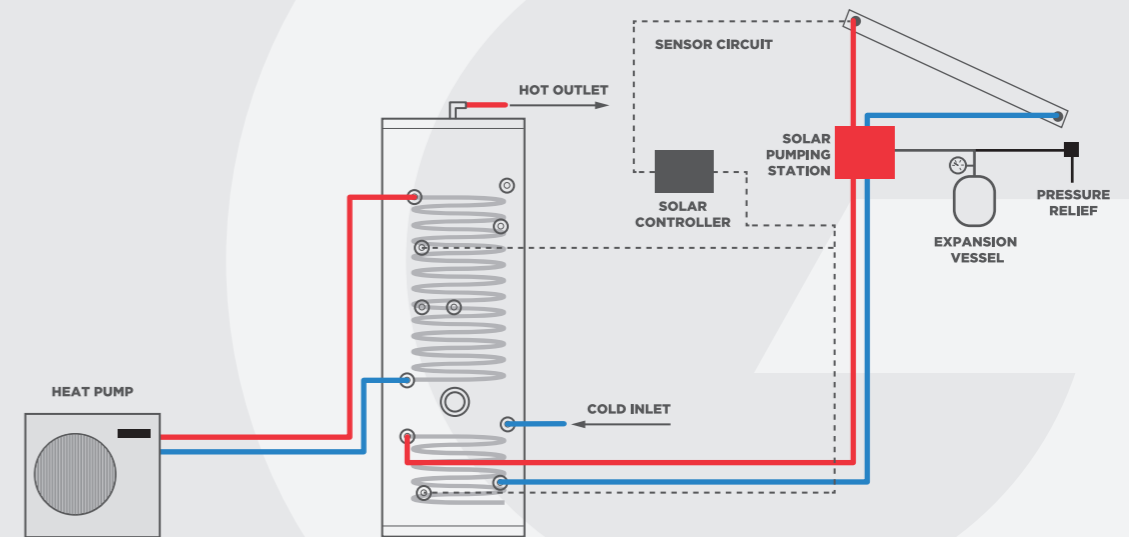


AIR OR GROUND SOURCE HEAT PUMPS



SOLAR THERMAL

## TECHNICAL SPECIFICATION



## STAINLESSLITE PLUS HEAT PUMP SOLAR

Description		HP180INDSOL	HP210INDSOL	HP250INDSOL	HP300INDSOL	HP400INDSOL
Product stock code		PLUHP180S	PLUHP210S	PLUHP250S	PLUHP300S	PLUHP400S
ErP rating		B	B	C	C	C
Heat loss	watts	55	62	74	86	87
Capacity	litres	178	208	248	287	393
Height	mm	1306	1494	1744	1990	2030
Diameter	mm	550	550	550	550	630
Weight (empty)	kg	33	37	44	48	61
Weight (full)	kg	211	245	292	335	461
Surface area of HP coil	m <sup>2</sup>	1.36	1.56	1.94	2.04	2.91
Dedicated solar volume	litres	63.5	74	88	102	130
Number of immersions		1	1	1	1	1
Secondary return		No	Yes	Yes	Yes	Yes

### NOTES:

- 1 For further ErP information, please refer to the installation manual at [www.gledhill.net](http://www.gledhill.net)
- 2 The schematics shown above are representational, please refer to the installation manual for full technical requirements

# STAINLESSLITE PLUS BUFFER STORE

90 | 120 | 210 | 300 | 400 LITRES



**STAINLESSLITE PLUS  
BUFFER STORE NOW  
B-RATED UP TO 210L**

## KEY FEATURES

- Open vented duplex stainless steel cylinder in direct or indirect models
- Buffer stores increase the overall volume of the heating distribution system, and reduce the cycling of the heat pump
- Designed for use with either air source or ground source heat pumps
- Indirect models for use with gas or oil boilers, utilise a high efficiency corrugated coil to maximise heat transfer



LIGHTEST CYLINDER  
ON THE MARKET

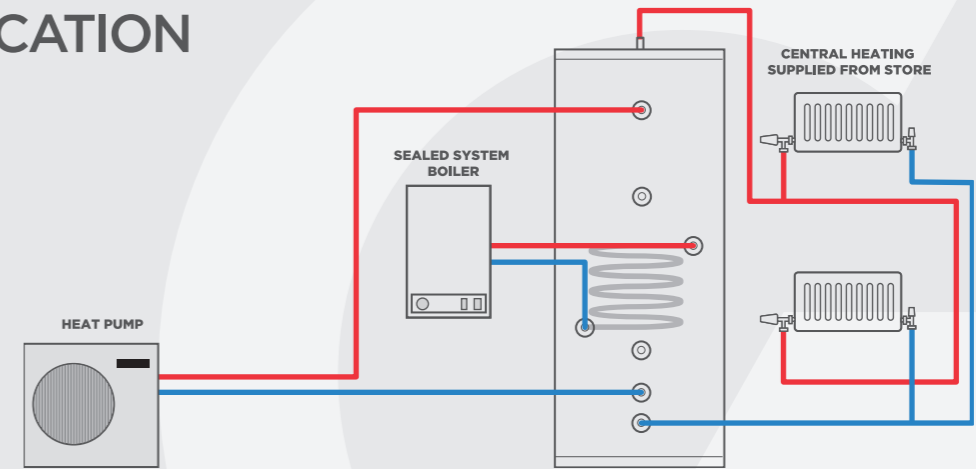


GAS OR OIL  
BOILERS



AIR OR  
GROUND SOURCE  
HEAT PUMPS

## TECHNICAL SPECIFICATION



### STAINLESSLITE PLUS DIRECT BUFFER STORE

Description		90D	120D	210D	300D	400D
Product stock code		PLUDR090B	PLUDR120B	PLUDR210B	PLUDR300B	PLUDR400B
ErP rating		A	B	B	C	C
Heat loss	watts	32	39	62	86	87
Capacity	litres	91	119	208	287	393
Height	mm	764	931	1494	1990	2030
Diameter	mm	550	550	550	550	630
Weight (empty)	kg	17	20	30	39	51
Weight (full)	kg	108	139	238	326	451

### STAINLESSLITE PLUS INDIRECT BUFFER STORE

Description		120IND	210IND	300IND	400IND
Product stock code		PLUIN120B	PLUIN210B	PLUIN300B	PLUIN400B
ErP rating		B	B	C	C
Heat loss	watts	39	62	86	87
Capacity	litres	119	208	287	393
Height	mm	931	1494	1990	2030
Diameter	mm	550	550	550	630
Weight (empty)	kg	22	32	41	55
Weight (full)	kg	141	240	328	455

#### NOTES:

- 1 For further ErP information, please refer to the installation manual at [www.gledhill.net](http://www.gledhill.net)
- 2 The schematics shown above are representational, please refer to the installation manual for full technical requirements

# STAINLESSLITE PLUS FLEXIBLE BUFFER STORE

90 | 120 | 210 | 250 | 300 | 400 LITRES



**STAINLESSLITE PLUS  
FLEXIBLE BUFFER STORE  
NOW B-RATED UP TO 210L**

## KEY FEATURES

- Open vented duplex stainless steel cylinder
- Provides connections for multiple inputs
- Suitable for use with air source or ground source heat pumps, wood burning stoves or open vented boilers
- Designed to directly supply the heating circuit
- Works up to 3.5 bar pressure



LIGHTEST CYLINDER  
ON THE MARKET



GAS OR OIL  
BOILERS

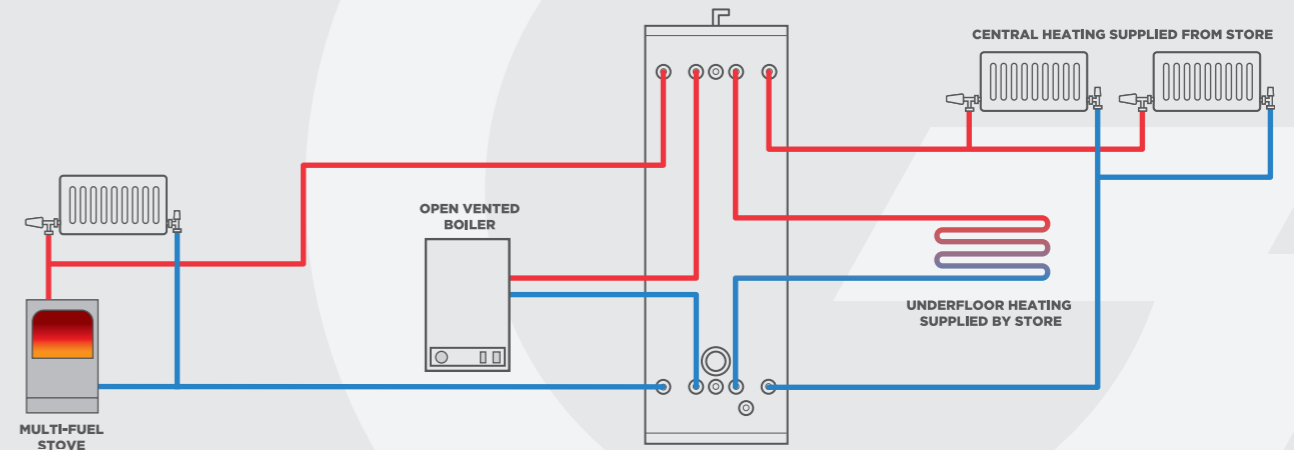


AIR OR  
GROUND SOURCE  
HEAT PUMPS



SOLID  
FUEL

## TECHNICAL SPECIFICATION



## STAINLESSLITE PLUS FLEXIBLE BUFFER STORE

Description		90FLX	120FLX	210FLX	250FLX	300FLX	400FLX
Product stock code		PLU090MB	PLU120MB	PLU210MB	PLU250MB	PLU300MB	PLU400MB
ErP rating		A	B	B	C	C	C
Heat loss	watts	32	39	62	74	86	87
Capacity	litres	91	119	208	248	287	393
Height	mm	764	931	1494	1744	1990	2030
Diameter	mm	550	550	550	550	550	630
Weight (empty)	kg	18	21	30	34	39	51
Weight (full)	kg	109	140	238	282	326	451

### NOTES:

1. For further ErP information, please refer to the installation manual at [www.gledhill.net](http://www.gledhill.net)
2. The schematics shown above are representational, please refer to the installation manual for full technical requirements



# STAINLESSLITE

PRE-PLUMBED, SYSTEM PLUS  
& SYSTEM READY

UNVENTED MAINS PRESSURE WATER  
CYLINDERS DEVELOPED FOR THE SOCIAL  
AND NEW BUILD HOUSING MARKET



DEVELOPED  
FOR NEW BUILD\*



LIGHTEST CYLINDER  
ON THE MARKET



GAS OR OIL  
BOILERS



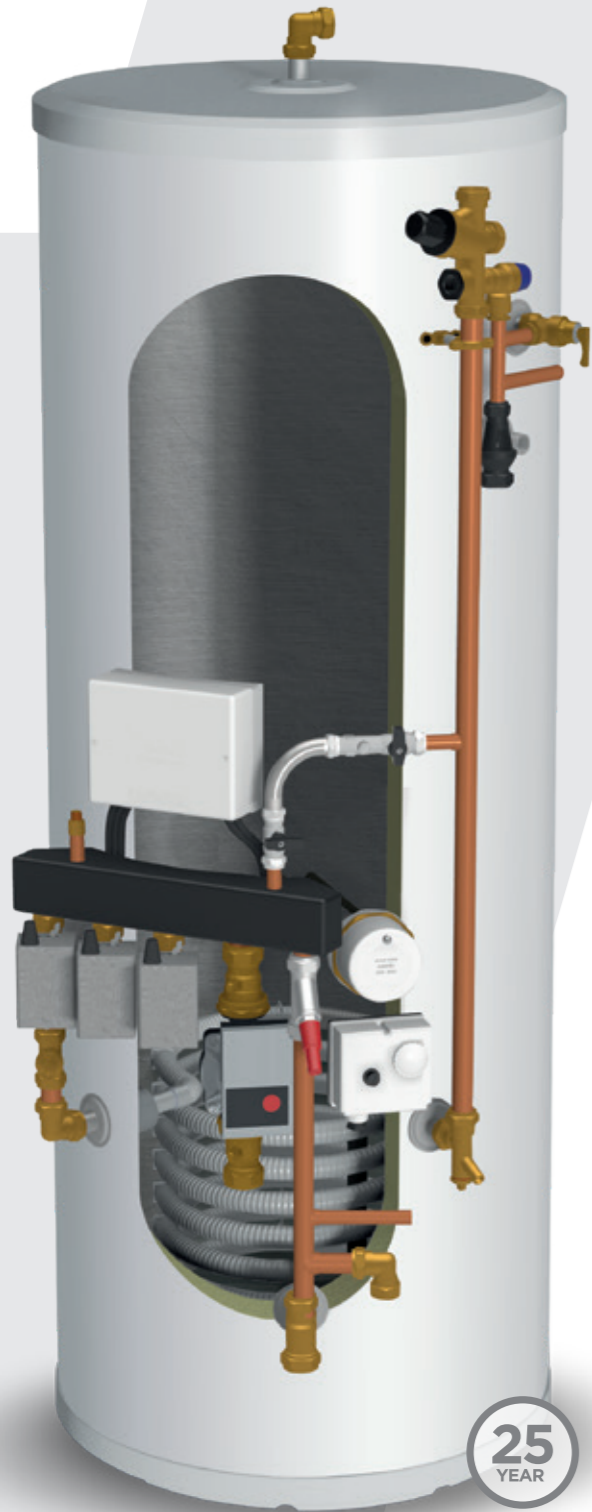
IMMERSION  
HEATER

\*StainlessLite Pre-Plumbed & StainlessLite System Plus developed for new build.



# STAINLESSLITE PRE-PLUMBED INDIRECT

120 | 150 | 180 | 210 | 250 | 300 LITRES



## KEY FEATURES

- B rated up to 210L
- Designed with flat top to increase insulation
- Wide base to improve unit stability
- Quality components ensure a reliable, durable product
- Designed to be fitted with a heat only boiler
- Manifold configuration comes complete with two heating zones and pump
- Tappings vertically aligned for easier pipework connections
- Pre-plumbed kit guarantees standardised pipe configuration for efficient new-build installations
- Fitting template helps speed up installation
- Corrugated coil provides increased heat transfer and prevention of scale build up
- Optional heating expansion kit available at time of order
- Optional room thermostats available at time of order, with one and two channels, to allow for two heating zones



25 YEAR WARRANTY



DEVELOPED FOR NEW BUILD



LIGHTEST CYLINDER ON THE MARKET

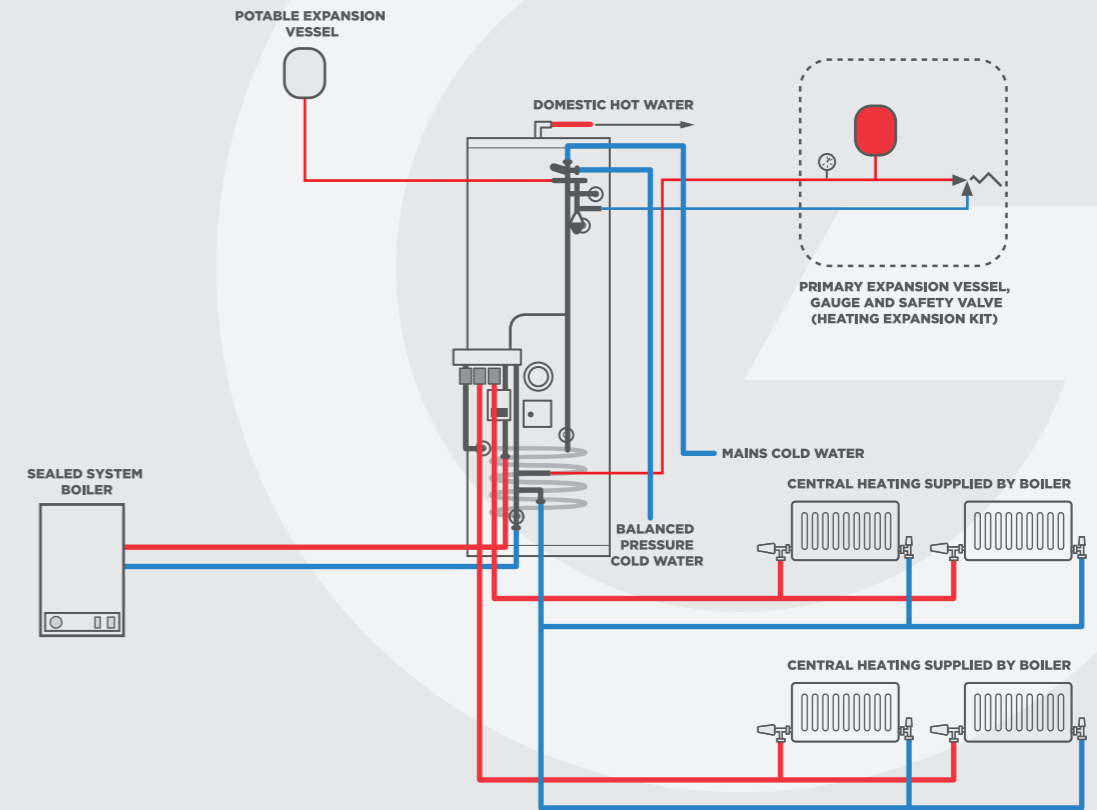


GAS OR OIL BOILERS



IMMERSION HEATER

## TECHNICAL SPECIFICATION



## STAINLESSLITE PRE-PLUMBED INDIRECT

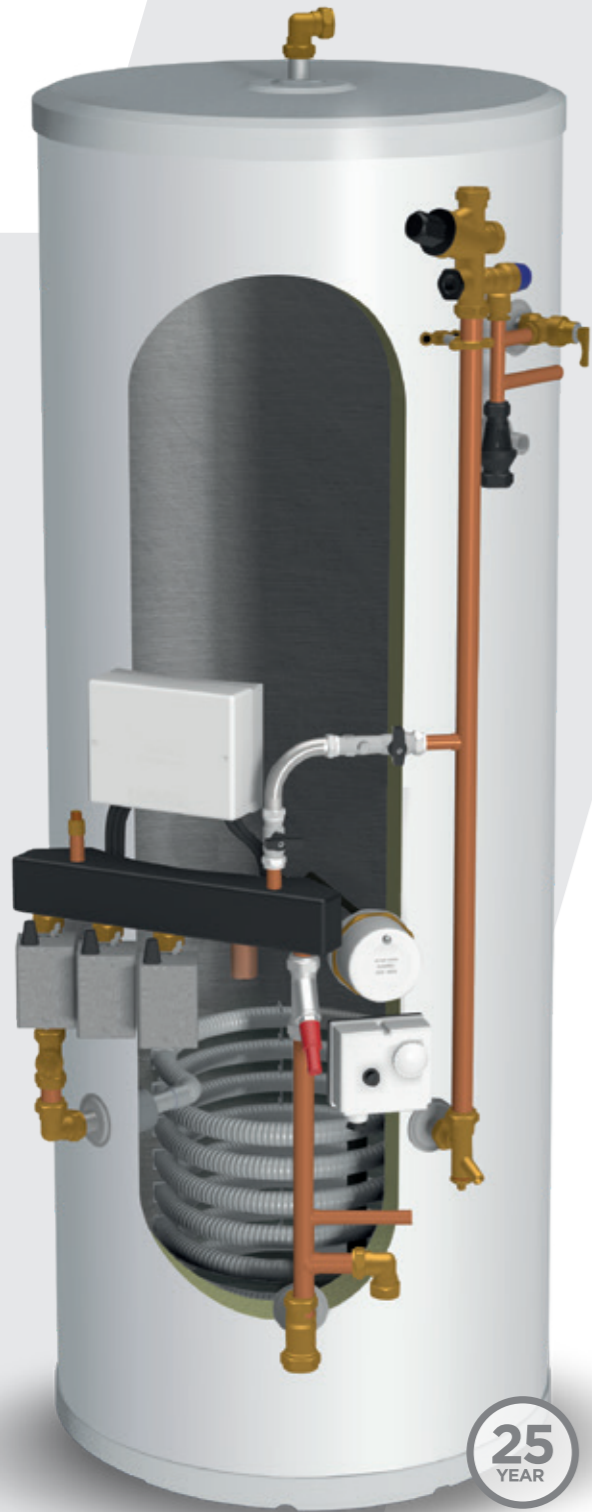
Description		IND120	IND150	IND180	IND210	IND250	IND300
Product stock code		PROIN120PP	PROIN150PP	PROIN180PP	PROIN210PP	PROIN250PP	PROIN300PP
ErP rating		B	B	B	B	C	C
Heat loss	watts	39	47	55	62	74	86
Capacity	litres	119	148	178	208	248	287
Height	mm	931	1118	1306	1494	1744	1990
Diameter	mm	550	550	550	550	550	550
Weight (empty)	kg	33	36	41	44	49	54
Weight (full)	kg	152	184	219	252	297	341
Heat up time	min	21	25	30	32	36	38
Number of immersions		1	1	1	1	2	2
Secondary return		No	No	No	Yes	Yes	Yes

### NOTES:

- 1 Heat up time from 15°C to 60°C (applies to primary heat source only)
- 2 For further ErP information, please refer to the installation manual at [www.gledhill.net](http://www.gledhill.net)
- 3 The schematics shown above are representational, please refer to the installation manual for full technical requirements

# STAINLESSLITE SYSTEM PLUS INDIRECT

120 | 150 | 180 | 210 | 250 | 300 LITRES



## KEY FEATURES

- B rated up to 210L
- Designed with flat top to increase insulation
- Wide base to improve unit stability
- Quality components ensure a reliable, durable product
- Designed to be fitted with system boilers
- Manifold configuration comes complete with two heating zones
- Tappings vertically aligned for easier pipework connections
- Pre-plumbed kit guarantees standardised pipe configuration for efficient new-build installations
- Fitting template helps speed up installation
- Corrugated coil provides increased heat transfer and prevention of scale build up
- Optional heating expansion kit available at time of order
- Optional room thermostats available at time of order, with one and two channels, to allow for two heating zones



25 YEAR WARRANTY



DEVELOPED FOR NEW BUILD



LIGHTEST CYLINDER ON THE MARKET

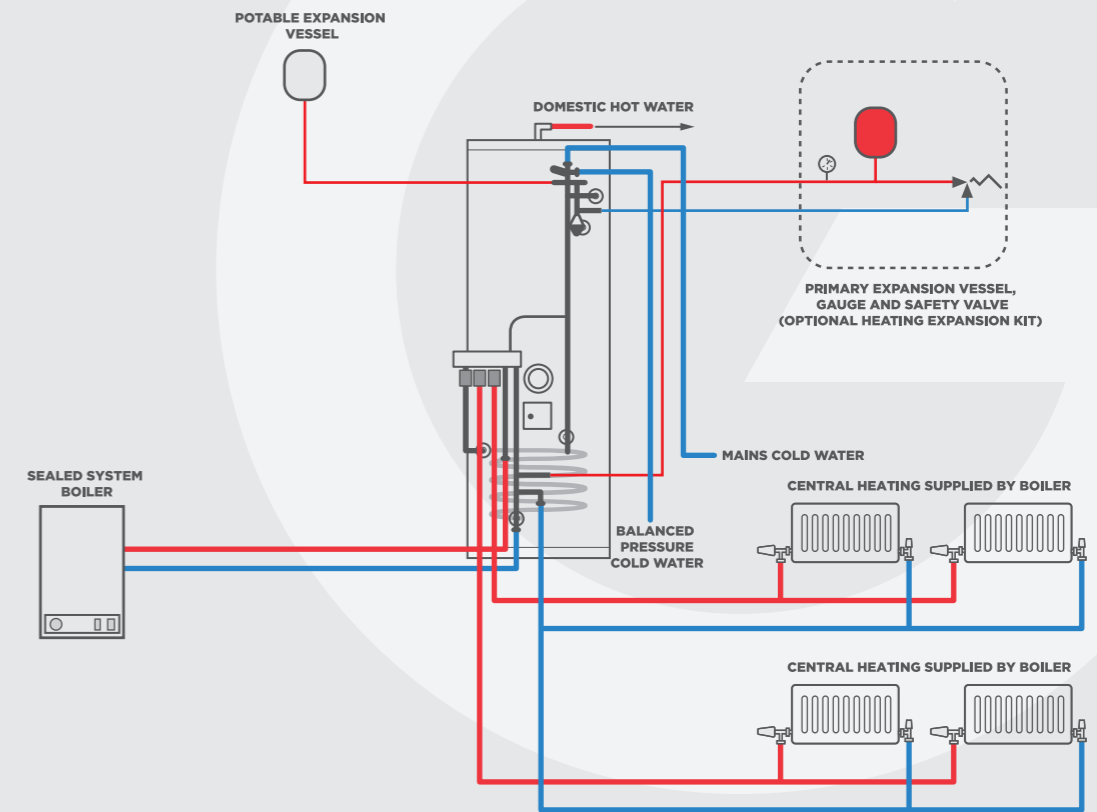


GAS OR OIL BOILERS



IMMERSION HEATER

## TECHNICAL SPECIFICATION



## STAINLESSLITE SYSTEM PLUS INDIRECT

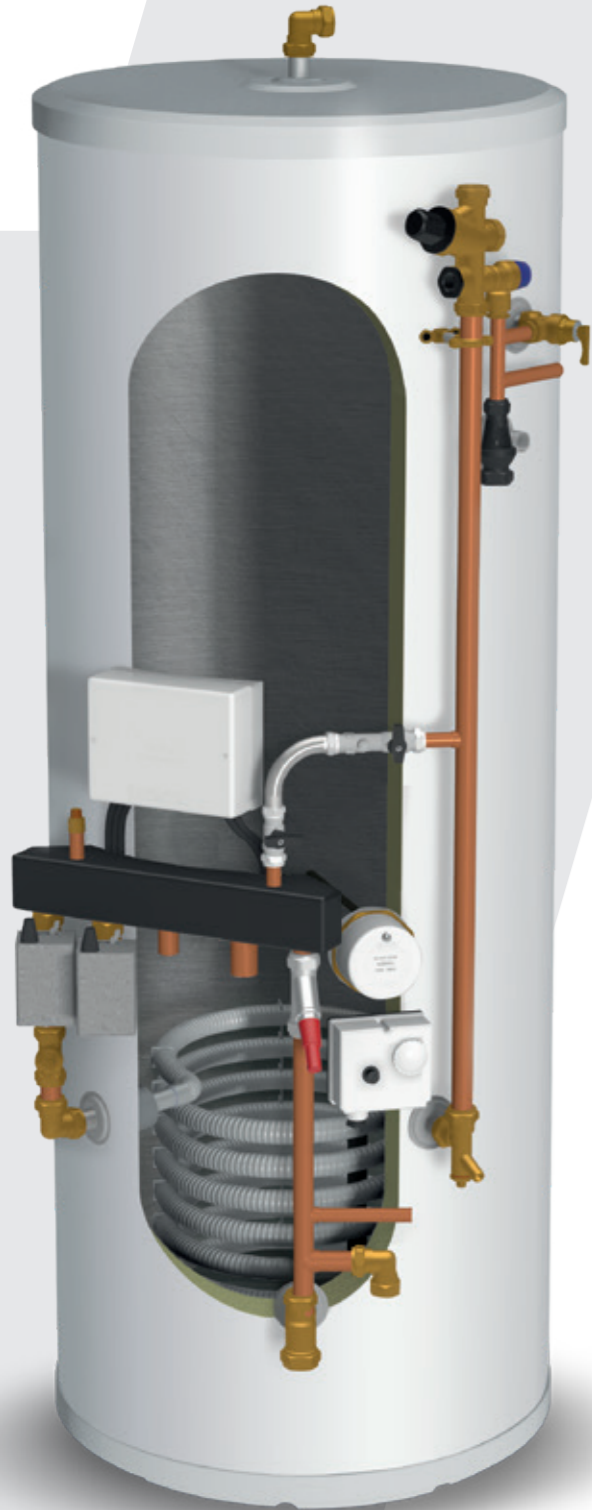
Description		IND120	IND150	IND180	IND210	IND250	IND300
Product stock code		PROIN120PPSP	PROIN150PPSP	PROIN180PPSP	PROIN210PPSP	PROIN250PPSP	PROIN300PPSP
ErP rating		B	B	B	B	C	C
Heat loss	watts	39	47	55	62	74	86
Capacity	litres	119	148	178	208	248	287
Height	mm	931	1118	1306	1494	1744	1990
Diameter	mm	550	550	550	550	550	550
Weight (empty)	kg	33	36	41	44	49	54
Weight (full)	kg	152	184	219	252	297	341
Heat up time	min	21	25	30	32	36	38
Number of immersions		1	1	1	1	2	2
Secondary return		No	No	No	Yes	Yes	Yes

### NOTES:

- 1 Heat up time from 15°C to 60°C (applies to primary heat source only)
- 2 For further ErP information, please refer to the installation manual at [www.gledhill.net](http://www.gledhill.net)
- 3 The schematics shown above are representational, please refer to the installation manual for full technical requirements

# STAINLESSLITE SYSTEM READY INDIRECT

120 | 150 | 180 | 210 | 250 | 300 LITRES



## KEY FEATURES

- B rated up to 210L
- Designed with flat top to increase insulation
- Wide base to improve unit stability
- Quality components ensure a reliable, durable product
- Designed to be fitted with system boilers
- Manifold configuration comes complete with one heating zones
- Tappings vertically aligned for easier pipework connections
- Pre-plumbed kit guarantees standardised pipe configuration for efficient new-build installations
- Fitting template helps speed up installation
- Corrugated coil provides increased heat transfer and prevention of scale build up
- Optional heating expansion kit available at time of order
- Optional room thermostats available at time of order, with one and two channels, to allow for two heating zones



25 YEAR WARRANTY



LIGHTEST CYLINDER ON THE MARKET

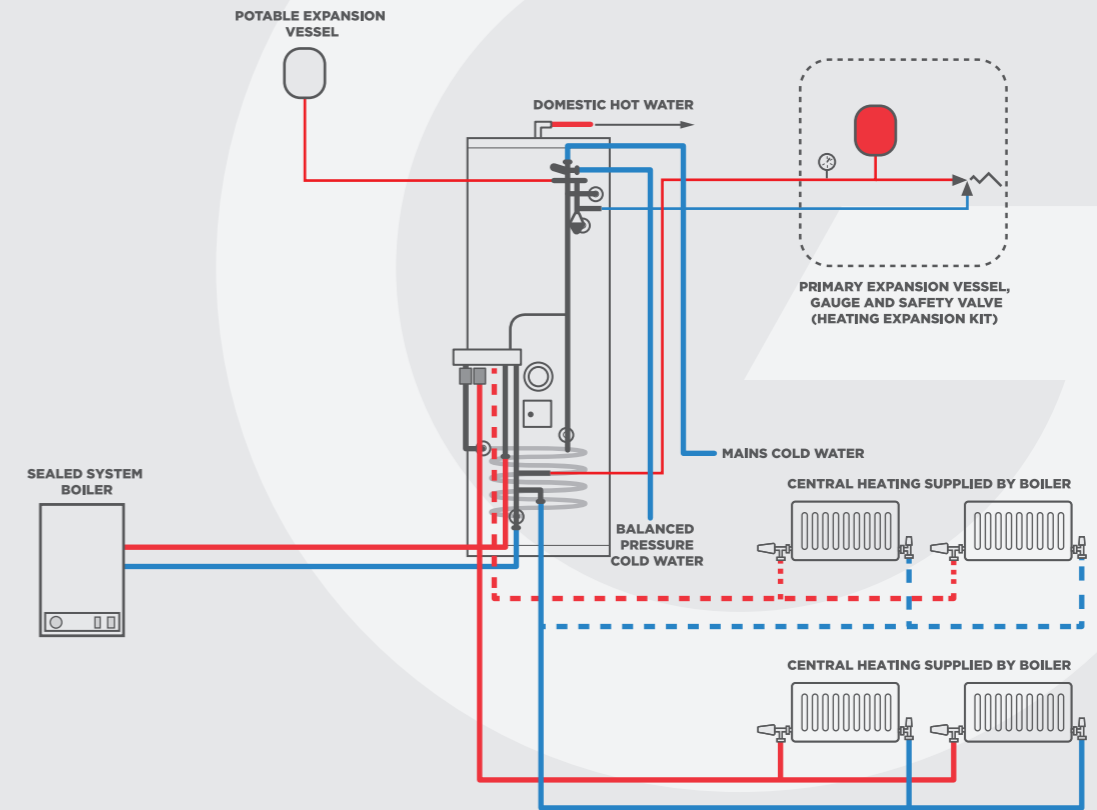


GAS OR OIL BOILERS



IMMERSION HEATER

## TECHNICAL SPECIFICATION



## STAINLESSLITE SYSTEM READY INDIRECT

Description		IND120	IND150	IND180	IND210	IND250	IND300
Product stock code		PROIN120PPSR	PROIN150PPSR	PROIN180PPSR	PROIN210PPSR	PROIN250PPSR	PROIN300PPSR
ErP rating		B	B	B	B	C	C
Heat loss	watts	39	47	55	62	74	86
Capacity	litres	119	148	178	208	248	287
Height	mm	931	1118	1306	1494	1744	1990
Diameter	mm	550	550	550	550	550	550
Weight (empty)	kg	33	36	41	44	49	54
Weight (full)	kg	152	184	219	252	297	341
Heat up time	min	21	25	30	32	36	38
Number of immersions		1	1	1	1	2	2
Secondary return		No	No	No	Yes	Yes	Yes

### NOTES:

- 1 Heat up time from 15°C to 60°C (applies to primary heat source only)
- 2 For further ErP information, please refer to the installation manual at [www.gledhill.net](http://www.gledhill.net)
- 3 The schematics shown above are representational, please refer to the installation manual for full technical requirements

# SUPPORT GUARANTEED

OUR NEW PRODUCT RANGE HAS BEEN CONSTRUCTED TO PROVIDE A SUITABLE SOLUTION FOR EVERY APPLICATION.



## WHY GLEDHILL?



### PEACE OF MIND

All our unvented cylinders come with a 25 year guarantee, as standard.



### RELIABILITY

Each of our products is subject to rigorous testing to emulate its lifecycle and ensure optimal performance.



### CUSTOMER SERVICE

Whether you're looking for technical advice, product expertise or aftersales support, our friendly, knowledgeable team are here to help.



### ACCESSIBLE

All our products are manufactured in the UK and distributed via our network of depots, boosting efficiencies and shortening lead times.



### SUSTAINABLE

All compatible factory waste is recycled, and installation of 1,000 solar panels at our manufacturing facility has reduced our energy consumption by 32%, resulting in a carbon saving of 84 tonnes per year.



ONE NAME. EVERY SOLUTION.

Twitter icon @GledhillGroup WWW.GLEDHILL.NET

## SPARES

Gledhill cylinders are manufactured to the highest quality standards. In the unlikely event that you require a spare part, you can contact Gledhill Spare Parts, on:

01253 474412

or visit [www.gledhill-spares.net](http://www.gledhill-spares.net)

## HERE TO HELP

If you're looking for technical assistance while you're on the job, give our technical team a call. With many years' experience, they're an invaluable resource to have at the end of the phone.

FOR TECHNICAL  
ADVICE PLEASE CALL  
**01253 474584**



Gledhill Building Products Limited  
Sycamore Estate,  
Squires Gate,  
Blackpool FY4 3RL

T: 01253 474550  
E: [enquiries@gledhill.net](mailto:enquiries@gledhill.net)

[WWW.GLEDHILL.NET](http://WWW.GLEDHILL.NET)



Due to a programme of continuous improvement Gledhill Building Products reserves the right to modify products without prior notice. It is advisable to check the product technical detail by using the latest design and installation manuals available from our technical support team or on our website. It is an offence to copy or adapt this document without consent of the owner.