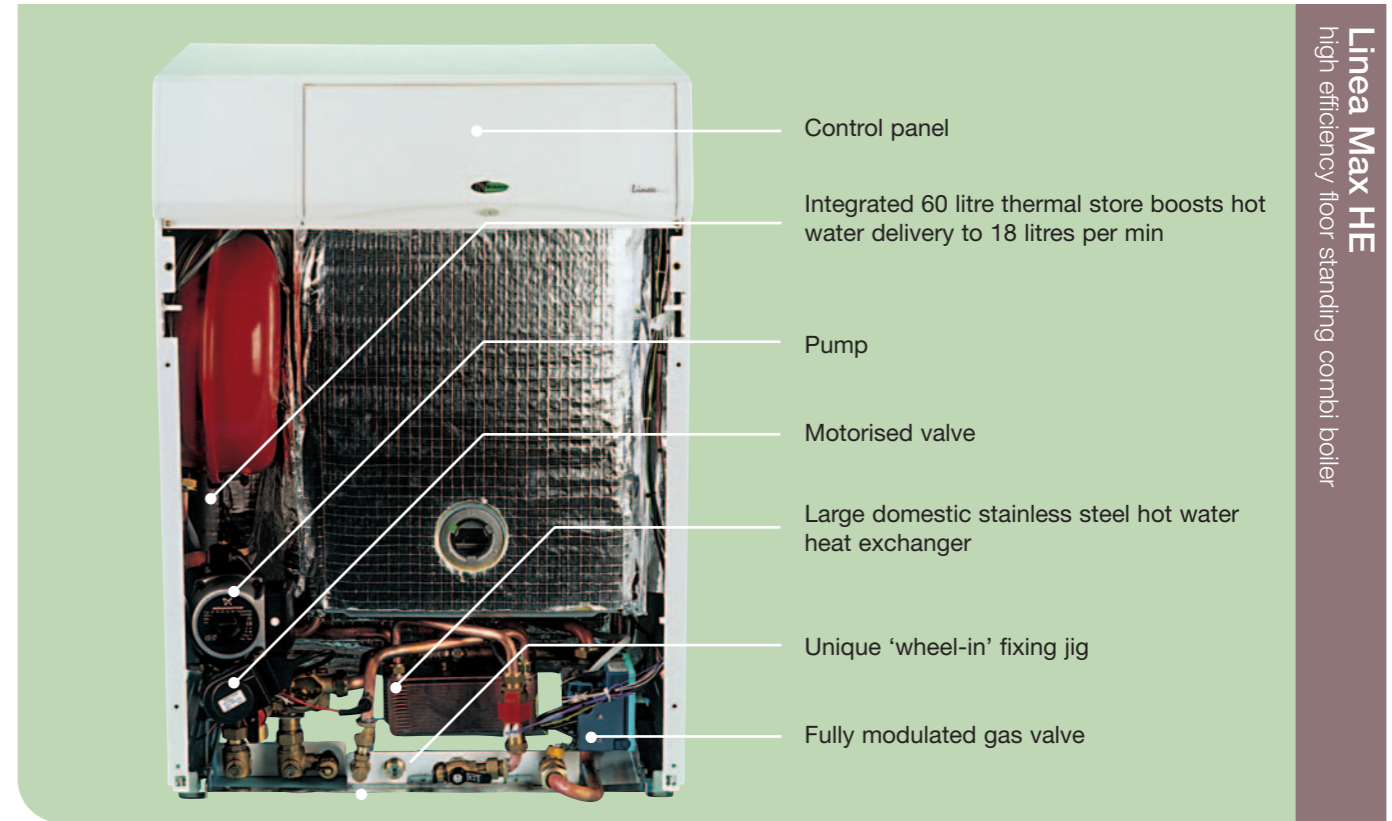


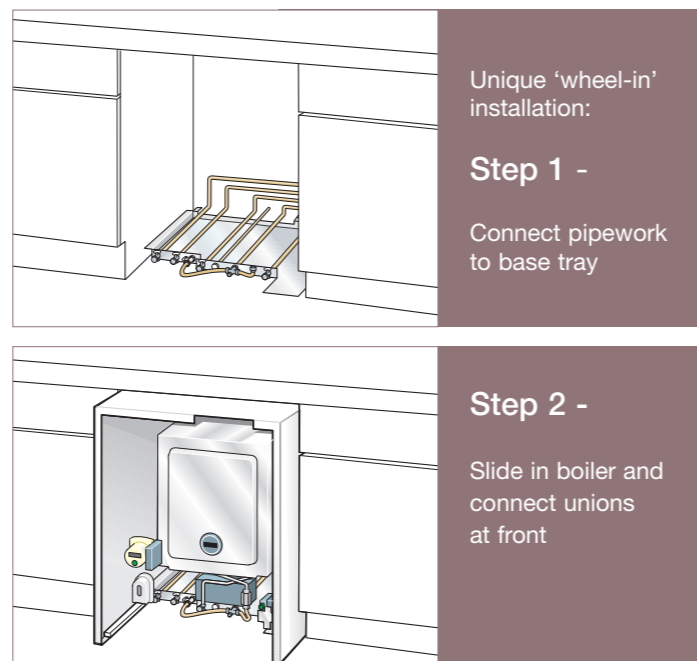


features



Linea Max HE  
floor standing high output  
high efficiency combi boiler

- SEDBUK 'B' rated.
- High domestic hot water flow rate makes Linea Max HE ideal for larger homes.
- 55% more flow rate than a combi of an equivalent output.
- An integrated 60 litre thermal store boosts domestic hot water delivery to 18 litre/min.
- The unique 'wheel-in' fixing jig allows pipes to be connected to a base tray without the boiler in place. Then simply slide boiler in and connect the unions at the front.
- Anti-cycling control prevents wasteful on/off cycling of the boiler, eliminating unnecessary wear and tear.
- The self-start programme protects the pump and motorised valve from sticking during long periods of inactivity.
- Linea Max HE can be flued horizontally or vertically using Vokèra's concentric or twin flue systems making the boiler extremely versatile.
- Built-in filling loop reduces installation time and material requirements.
- Gas pressure set by gas valve, therefore no flue Gas Analyser required.
- Linea Max HE reduces running costs by up to 35% more than a conventional boiler, helping to safeguard the environment.
- Designed for easy installation. Standard Vokèra pipework layout enables trouble-free replacement of older Vokèra models.
- Built-in frost protection, protects the appliance from damage during periods of cold weather.
- Plated heat exchanger reduces the risk of scaling and comes with 5-year anti-scale warranty.



specifications

	Linea Max HE
Heat output at 80°C/60°C (kW)	28.1
Heat output 50°C/30°C (kW)	30.2
DHW flow rate (litres per minute)	18*
Standard flue terminal length (mm)	1000
<b>Maximum flue length</b>	
Horizontal (60/100mm)	2.0m
Vertical (60/100mm)	3.0
Horizontal (80+80mm)	12m + 12m
Minimum cold water inlet pressure	0.15 bar
Expansion vessel capacity	10-litres
System volume	91-litres
Dry weight (kg)	91
Electrical	230Vac 50Hz
Power consumption	150w
<b>Pipe connections</b>	
Flow	22mm
Return	22mm
Cold water inlet	15mm
Hot water outlet	15mm
Gas	15mm
Condense	21mm
Safety valve	15mm

\* Until thermal store depleted, then as Linea 726 (or recovery to full performance in approximately 5 minutes)  
 \*\* The appliance flue elbow on the Linea Max cannot be used with a vertical flue application and should be discarded.

dimensions | clearances

