

slim-line

general specifications

DESCRIPTION

Measuring less than 400mm wide, the Slim-Line can be installed in a wide variety of applications where space is

the limiting factor. The unit has a variable integral thermostat and three fan speeds.

PRODUCT RANGE

MODEL	ISOLATING VALVES	FILTER	CONTROLS COVER	THERMOSTAT
SLIM-LINE	●	●	●	●

● Supplied as standard

COLOUR REFERENCE (MAIN CASING)

White (RAL 9003) or Cream (RAL 1013) with contrasting high impact polystyrene top cap.

WATER CONNECTIONS AND CONTROLS

Water connections (15mm compression) are on the left-hand side and the system pipework may be brought in from underneath or the rear.

Electrical controls and connections are in the centre and are protected by a tamper proof controls cover.

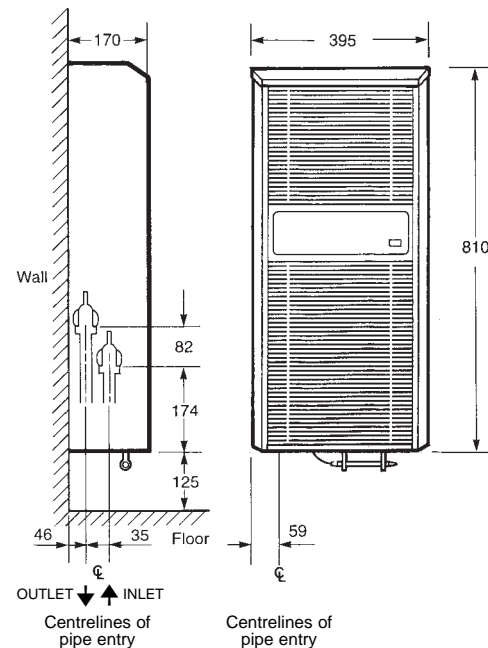
FAN ONLY OPERATION

A fan only option is available which allows a flow of air to be circulated when the heating element is not in operation.

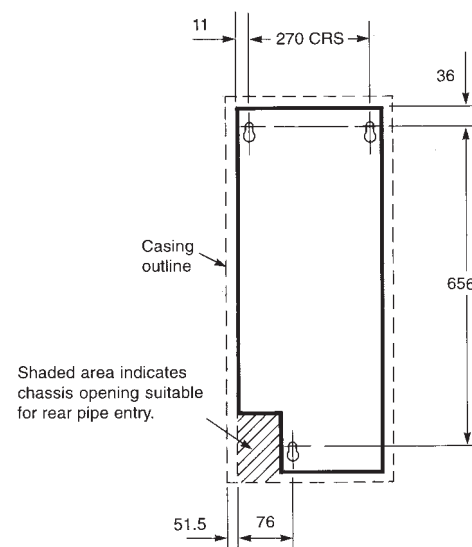
FILTER

A washable filter is fitted behind the inlet grille. The grille and filter can be removed without tools.

DIMENSIONS



POSITION OF FIXINGS AND CLEARANCES



PERFORMANCE DATA

It is preferable to select the model with an output capable of maintaining the calculated heat losses of the room when operating at normal speed. This will enable the boost fan speed and the higher temperature differences to be used to greater advantage for rapid warming of the room from cold in excessive conditions.

When establishing the temperature difference, i.e. mean water to room temperature, allowance should be made for temperature drop in the system. It is the temperature at the convector which dictates the output.

SLIM-LINE PERFORMANCE DATA

MODEL	POWER CONSUMPTION watts	WATER CAPACITY litres	FAN SPEED	HEAT OUTPUT watts TEMPERATURE DIFFERENCE °C						HEAT OUTPUT Btu/h TEMPERATURE DIFFERENCE °F					
				20°	30°	40°	50°	60°	66.6°	36°	54°	72°	90°	108°	120°
SLIM-LINE	125	0.51	NORMAL	860	1340	1820	2290	2770	3080	2934	4572	6210	7813	9431	10509
			MEDIUM	1130	1710	2280	2870	3460	3840	3856	5835	7779	9792	11806	13102
			BOOST	1470	2220	2960	3720	4460	4950	5016	7575	10100	12693	15218	16889

Heat outputs tested in accordance with BS 4856 Part 1.

FLOW RATE: 340 ltr/h (75 gal/h)

FLOW RATE CORRECTION FACTORS:

455 ltr/h (100 gal/h) multiply output by 1.03

227 ltr/h (50 gal/h) multiply output by 0.96

113 ltr/h (25 gal/h) multiply output by 0.85

APPROXIMATE HYDRAULIC RESISTANCE

MODEL	ltr/h	mm wg	ft wg	gal/h
SLIM-LINE	455	1771	5.81	100
	340	1161	3.81	75
	227	561	1.84	50
	113	201	0.66	25

SOUND PRESSURE AND WEIGHTS

MODEL	SOUND PRESSURE AT 2.5m dBA			UNIT WEIGHT kg
	NORMAL	MEDIUM	BOOST	
SLIM-LINE	21.9	30.6	39.7	14.5

AIR FLOW

MODEL	AIR FLOW m ³ /h			AIR FLOW ft ³ /h		
	NORMAL	MEDIUM	BOOST	NORMAL	MEDIUM	BOOST
SLIM-LINE	164	216	316	5789	7625	11155

Sound pressure tests in accordance with EN 23741.

ELECTRICAL DATA

The Slim-Line fan convector requires an electrical supply of 220-240V-50Hz fused at 3A.